

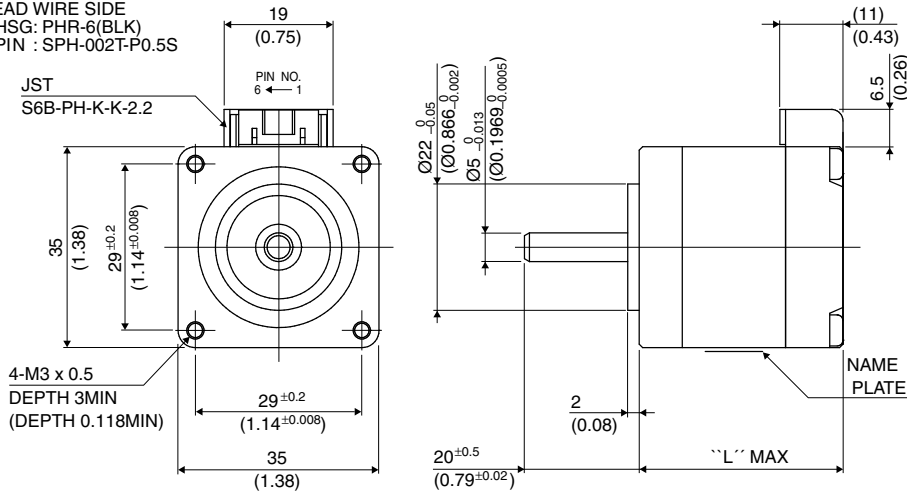
# 35□ 1.8°

# 14PM-F

# 1.8°

## Outline

- LEAD WIRE SIDE
- HSG: PHR-6(BLK)
- PIN : SPH-002T-P0.5S



Hybrid

UNIT: mm  
(inch)

PIN NO. vs. PHASE

(PHASE)	A	ACOM	$\bar{A}$	B	BCOM	$\bar{B}$
(PIN NO.)	4	—	3	6	—	1

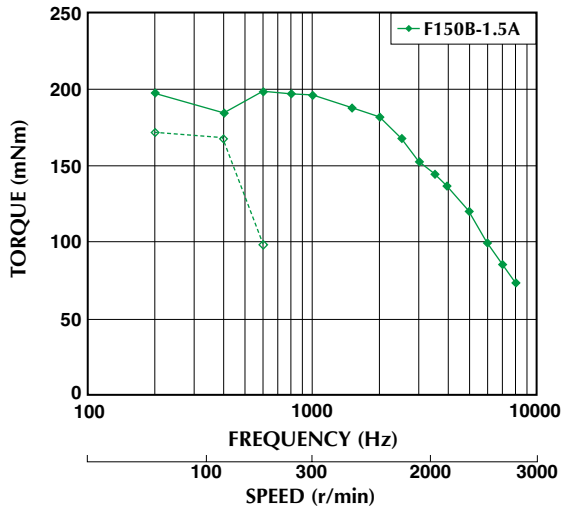
	"L"
14PM-F6**	32 (1.26)
14PM-F1**	36 (1.42)
14PM-F4**	51 (2.01)

## Specifications

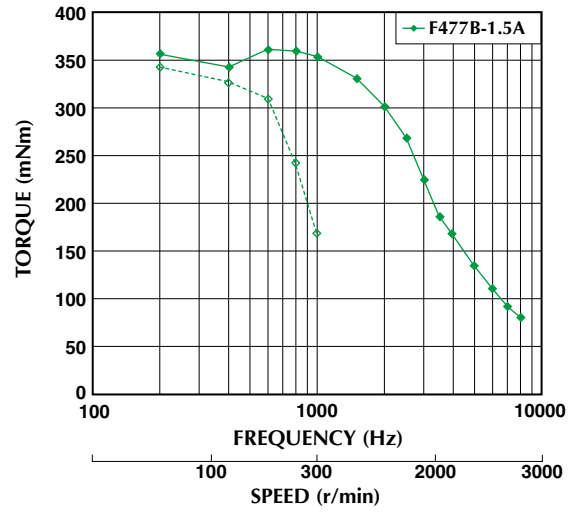
Model	Step Angle (deg)	Drive Sequence	Rated Current (A)	Resistance (Ohms)	Holding Torque (mNm)	Inductance (mH)	Rotor Inertia (g·cm <sup>2</sup> )	Detent Torque (mNm)	Mass (g)
14PM-F647B	1.8	BI-POLAR	1.5	1.2	130	1.2	15	5.3	150
14PM-F150B	1.8	BI-POLAR	1.5	1.8	230	2.6	20	8.2	180
14PM-F447B	1.8	BI-POLAR	1.5	2.2	400	3.7	43	13.7	290

## Torque/Speed Characteristics

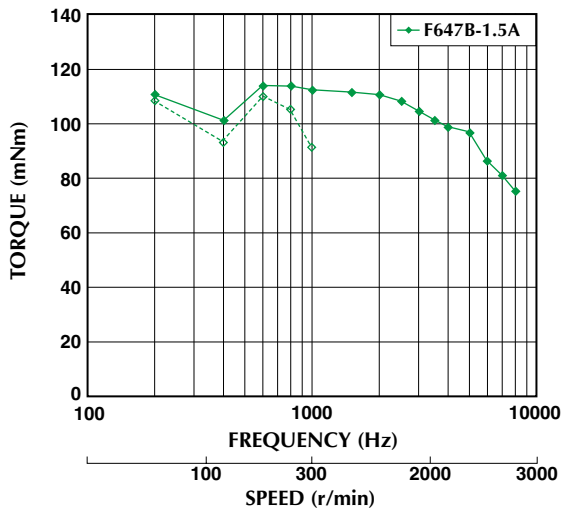
Model No: 14PM-F150B  
 Driver: Chopper Dual  
 Supply Voltage: 24.0 (Volt)



Model No: 14PM-F447B  
 Driver: Chopper Dual  
 Supply Voltage: 24.0 (Volt)



Model No: 14PM-F647B  
 Driver: Chopper Dual  
 Supply Voltage: 24.0 (Volt)



— : PULL OUT  
 - - - : PULL IN

Torque/Speed characteristics are for reference only and it may change when operated at different drive conditions.